

## Shoal Lake Aqueduct Rehabilitation Urethane Injection

**STRUCTURE:** Shoal Lake Aqueduct

**LOCATION:** Between Indian Bay, MB & Winnipeg, MB

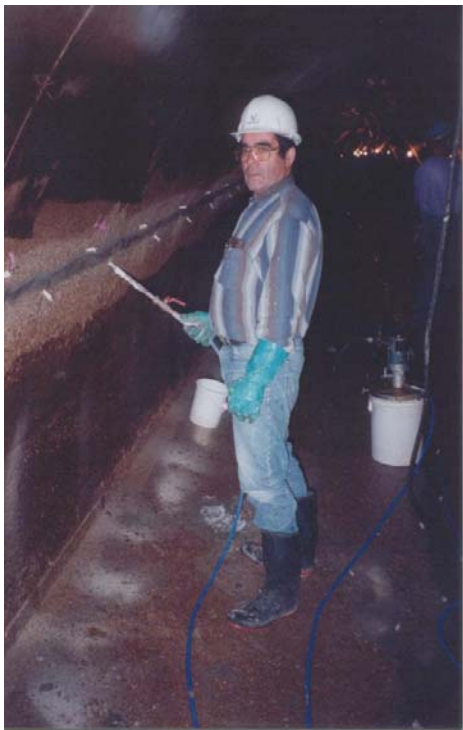
**PROJECT DATES – CONTRACT AMOUNTS:**  
 September 1996 - \$380,000  
 November 1996 - \$430,000  
 November 1997 - \$430,000  
 October 2000 - \$370,000  
 October 2001 - \$455,000  
 October 2002 - \$450,000  
 October 2003 - \$500,000

**PRODUCTS USED:** Flex F1000 & Waterplug

**JOB DURATION:** 2 weeks per shutdown

**CLIENT:** City of Winnipeg

**CONTRACTOR:** Vector Construction Ltd.



### PROJECT DESCRIPTION:

The Shoal Lake Aqueduct was built in 1913 to supply Winnipeg with clean potable water. The aqueduct has shifted many times since being built and continues to shift every year creating cracking throughout the entire structure. Originally 20% of water entering the aqueduct was leaking out through these cracks. To prevent groundwater infiltration and water leaking out of the aqueduct, urethane injection of cracks and joints was completed. The city of Winnipeg allowed for 2 weeks of work inside the aqueduct each year starting in 1996 and ending in 2003. The city generally awards 2 contracts each year with each contract stretching anywhere from 1 to 10 miles, depending on the severity of leakage. Approximately 2000m of crack and joint are injected in each contract. Due to the short time frame to complete this work, an immense work force is needed along with many long days.



#### CORPORATE OFFICE

474 Dovercourt Drive  
 Winnipeg, Manitoba, R3Y 1G4  
 Ph. (204) 489-6300  
 Fax (204) 489-6033  
 Email: vector@vectorgroup.com

#### REGIONAL OFFICES

Manitoba Winnipeg (204) 489-6300  
 Ontario (North) Thunder Bay (807) 346-4405  
 Ontario (South) Stoney Creek (905) 662-4020  
 Saskatchewan Saskatoon (306) 934-3533  
 Alberta Spruce Grove (780) 962-6778

North Dakota Fargo (701) 280-9697  
 Nebraska Sioux City (402) 494-9305  
 Iowa Cedar Rapids (319) 364-5355