

DON'T REPLACE, REHABILITATE

CREATE A NEW PIPE WITHIN
AN OLD PIPE!

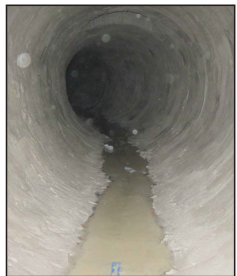
GeoSpray®

is designed to restore a variety of structures:

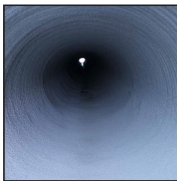
- Culverts
 - Sewers
 - Manholes
 - Tanks
-
- Requires no digging
 - Minimizes installation footprint
 - Enhanced physical performance
 - Adapts to any shape



BEFORE



AFTER



GeoSpray® is used to rehabilitate culverts, pipes and other structures in the civil, gas and oil and chemical industries.

We Save Structures™

GeoSpray® geopolymer is a unique high performance fiber reinforced mortar for structural rehabilitation of culverts and pipes.

ENGINEERED

- 1st *Just-Add-Water* geopolymer system
- Thickness design based on lab results
- Self-bonding
- Pumpable to 500 feet
- Adapts to any shape including bands, curves and angles

LOWER TOTAL COST

- Lower installation and operating costs
- Less disruption to public
- Faster installation

SAFE

- Unlike CIPP, it is styrene FREE
- Contains no leachable toxins
- Passes EPA TCLP toxicity characteristic Leaching procedure
- Passes NSF 61: suitable for potable water

GeoSpray® provides physical properties similar to cement mortars, but with chemistry more similar to that of engineered stone, and because of its unique chemical nature it prevents cold joints between layers.

Vector and the Vector logo are registered trademarks. GeoSpray is a registered trademark of Clock Spring | NRI.

204-489-6300 or 1-800-665-6680
info@vector-construction.com

VECTOR-CONSTRUCTION.COM
VECTOR-CORROSION.COM

